



BankWorld ATM Studio – Advanced



BankWorld ATM Studio is a powerful design tool that allows banks to create and rapidly deploy content-rich branding to their ATM networks.

CR2 offers a suite of training courses about this tool to cater for audiences that require anything from an overview of the tool to in-depth knowledge. This course is the final course of three courses in the BankWorld ATM Studio Training Suite.



The course trains participants in the more advanced features of the ATM Studio tool. This is a hands-on course that allows participants to practice various tasks.

Benefits:

You will be able to localise the screens on your ATMs/Kiosks, set up specific types of inputs and outputs, and handle advertisements.

Having trained staff within the bank who can do this, will generate revenue through offering services to different markets, offering new services, and using advertisements. Consultancy costs will also be reduced.

Duration:

0.5 day (classroom-based)

Audience:

- ❖ Bank Marketing personnel
- ❖ Bank Graphic Designers

Location:

CR2 offices in Dublin, Dubai and Amman. Can also be run onsite on request.



Our training is a blend of classroom and online training and includes:

- Overviews
- Installation
- Configuration
- Operations
- Tools

For more information please email us at training@cr2.com.

www.cr2.com



Pre-requisites:

- ❖ The eLearning course entitled *Introduction to BankWorld ATM Studio*
- ❖ The classroom course entitled *BankWorld ATM Studio*
- ❖ A basic understanding of ATMs
- ❖ Some graphic design experience would be advantageous

Objectives: At the end of this course you will be able to:

1. Upgrade from a previous version of BWAC/Studio
2. Add support for a new language
3. Merge language databases
4. Configure a Bank Instruction receipt
5. Format input fields
6. Change the format of an output table
7. Use the Selection element
8. Use the Advertisement element

Course Outline:

- ❖ Upgrading from a previous version of BWAC/Studio
- ❖ Language Considerations
- ❖ Bank Instruction Receipts
- ❖ Inputs and Outputs
- ❖ Advertisements
- ❖ Course Exam

Materials:

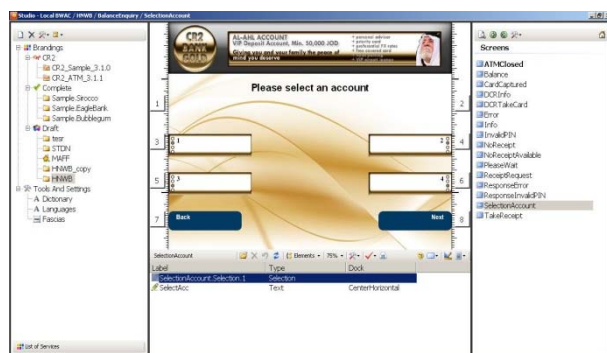
Course Participant Guide, Course handouts / diagrams, Glossary, relevant User Guides, etc., supplied on Apple iPad¹ (or equivalent) or on USB key.

Our training is a blend of classroom and online training and includes:

- Overviews
- Installation
- Configuration
- Operations
- Tools

For more information please email us at training@cr2.com.

www.cr2.com



¹ Apple iPad (or equivalent) only supplied if course is undertaken at a CR2 office location.